

Product Description

The ZAT Operator Console is a family of several console products. The C2000 series combines Windows NT-based software with high performance personal computer hardware to create powerful operator interfaces for ZAT-Plant Suite MP process control systems.

ZAT operator console family C2000 contains several types of workplaces. The single types can be combined in various ways to create many types of operator consoles. The software part of the solution is based on the HMI system InTouch. This system works on the Windows – family operating system, makes use of its best capabilities and supports up to 60 000 I/O points.

The hardware contains various types of computers: from desktop workstations to ruggedized industrial computers, equipped with up-to-date processors and other configurations.

The basic types of the family are the following:

- The console C2001 is intended for two 21 inch screens. It can be formed by two separate computers, making two independent workplaces, or by one computer equipped with a dual-monitor video adapter and two monitors.
- The console C2002 is similar to the C2001, but the space for monitors is heightened to make additional space for the operator.
- The console C2003 is intended primarily for engineering stations, requiring occasional connecting to various signal sources. Therefore its construction is not as compact as the 2001 and 2002 ones are.
- The console C2004 is an equivalent of the C2001 type, but only for one monitor.
- The C2005 is a half-size equivalent of the C2002.

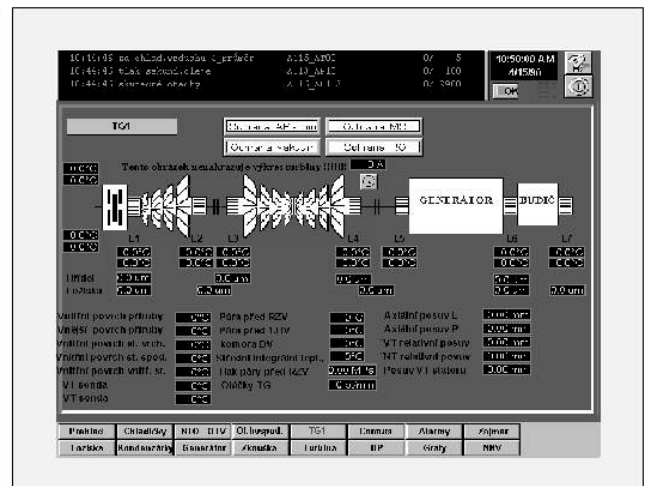
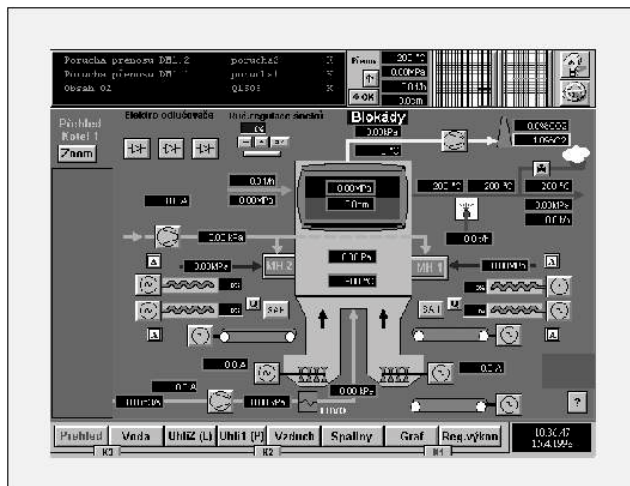


Fig. 1 Typical ZAT Operator Console Interface with Dual Monitors

Fig. 2 **Operator Console C2001**

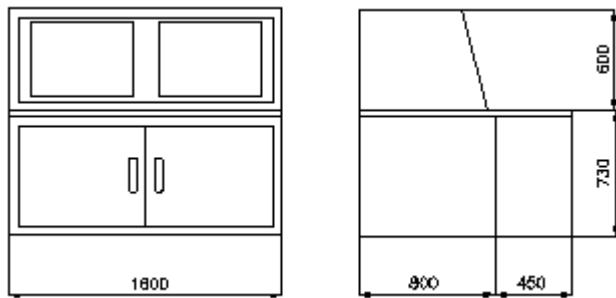


Fig. 3 **Operator Console C2002**

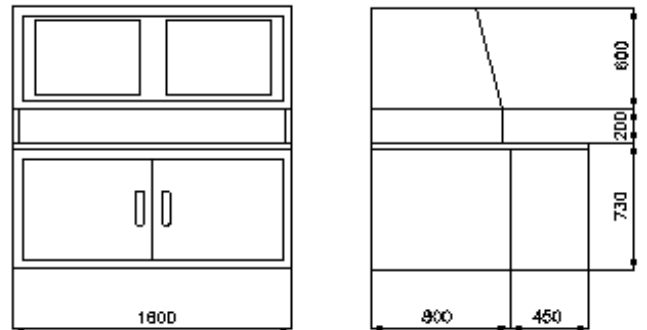


Fig. 4 **Operator Console C2003**

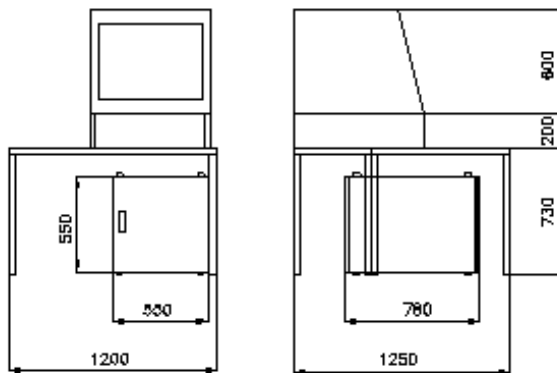


Fig. 5 **Operator Console C2004**

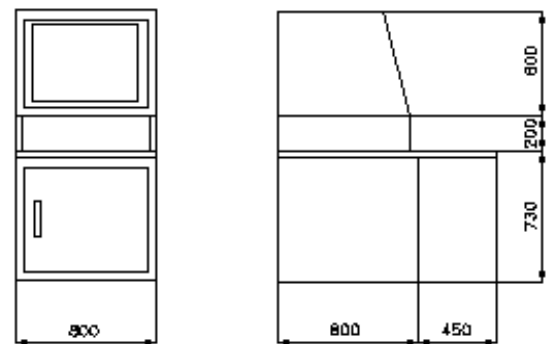


Fig. 6 **Operator Console C2005**

